

12 Fiber MPO To LC Patch Cable With A 2.0mm Single Mode 9/125 OFNP Plenum Yellow Jacket

Our Product Introduction

for more products please visit us on optical-fibercables.com

Basic Information

- Place of Origin: Shenzhen, China
- Brand Name: FiberMania
- Certification: ISO, UL, CE, RoHS
- Model Number: MAFLC-SM12S3RYL
- Minimum Order Quantity: 10 Pieces
- Price: Negotiable
- Packaging Details: PE bag or OEM service optional
- Delivery Time: 5 days
- Payment Terms: T/T, Western Union, L/C
- Supply Ability: 10000 Pieces per day

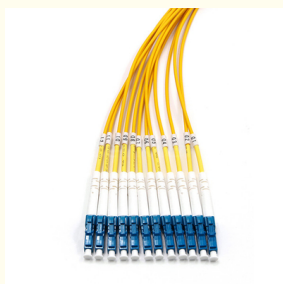


Product Specification

- Connector A: MPO/APC
- Connector B: LC/UPC Simplex
- Fiber Count: 12 Fibers
- Cable (OD): 3.0mm
- Breakout (OD): 2.0mm
- Fiber Mode: OS2 9/125μm
- Cable Jacket: OFNP
- Jacket Color: Yellow
- Name: 12 Fiber LC Patch Cable
- Highlight: **12 Fiber LC Patch Cable,
12 Fiber MPO To LC Fiber Cable,
Yellow Jacket MPO To LC Patch Cable**



More Images



Product Description

Data Center 12-Fiber MPO to LC Breakout Patch Cable with a 2.0mm Single Mode 9/125 OFNP Plenum Yellow Jacket

12 Fiber MPO to LC Breakout Patch Cable is a high-density fiber optic patch cord that features 12 fiber MPO (Multi fiber Push On) connectors on one side and multiple LC (Lucent Connector) connectors branching off on the other side. MPO to LC branch jumpers simplify fiber optic cabling, making installation and maintenance more convenient. They are suitable for 10G/40G data transmission and information exchange, as well as fiber channel and infinite bandwidth applications. This type of jumper is commonly used in environments that require high-density fiber optic cabling, such as data centers, telecommunications networks, and local area networks.

Applications of MPO Breakout Patch Cable

1. Data Center Interconnect
2. High-Density Fiber Management
3. Telecommunication Networks and CATV networks
4. LAN/WAN Premises

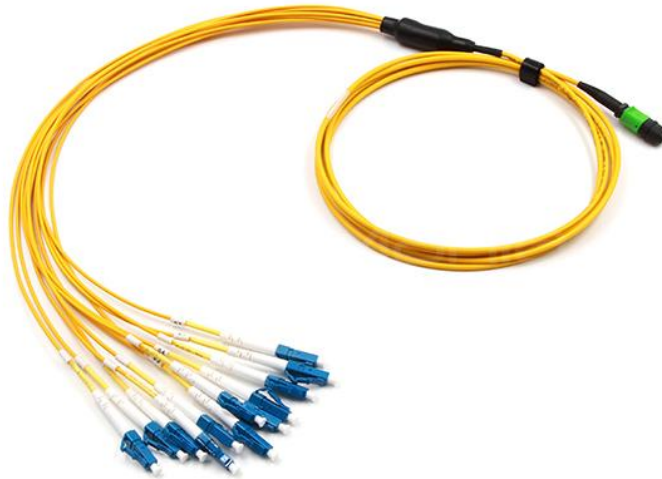
Features of MPO Breakout Patch Cable

1. Low insertion loss and high return loss
2. High precision connector
3. PC UPC APC end face polish
4. Up to 288 fibers - ideal for high-density applications
5. 100% factory terminated and tested
6. Pulling eyes are provided as an option to protect the fiber ends during installation
7. Save installation and reconfiguration time
8. Customized length available
9. ROHS Compliant

Specifications of MPO Breakout Patch Cable

Connector	MPO(Male)	LC
Fiber Mode	OS2 9/125μm	OS2 9/125μm
Polishing Type	APC	UPC
Connector IL	0.35dB Max (0.15dB Typ.)	≤0.2dB
Connector RL	≥60dB	≥50dB
Wavelength	1310/1550nm	
Glass Fiber	Corning SMF-28® Ultra	
Fiber Grade	G.657.A1 (Compatible with G.652.D)	
Attenuation at 1310nm	≤0.32dB/km	
Attenuation at 1550nm	≤0.18dB/km	
Installation Tensile Load	66N	
Tensile Strength (Long/Short Term)	80/240N	
Storage Temperature	-40 to +85°C	
Operating Temperature	-20 to +85°C	





 **FIBERMANIA** Shenzhen FiberMania Technology Co., Ltd.



17704025189



sales@fiber-mania.com



optical-fibercables.com

3F, Building A2, Yinlong Industrial Park, Longdong, Longgang District, Shenzhen, China, 518116