



FIBERMANIA

Shenzhen FiberMania Technology Co., Ltd.  
optical-fibercables.com

## 1U 192 Fiber Ultra High Density Angled MPO Patch Panel Fully Loaded

Our Product Introduction

for more products please visit us on [optical-fibercables.com](http://optical-fibercables.com)

### Basic Information

- Place of Origin: Shenzhen, China
- Brand Name: FiberMania
- Certification: ISO, UL, CE, RoHS
- Model Number: MTPHDA-192LCSL-1U
- Minimum Order Quantity: 10 Pieces
- Price: Negotiable
- Packaging Details: PE bag or OEM service optional
- Delivery Time: 5 days
- Payment Terms: T/T, Western Union, L/C
- Supply Ability: 10000 Pieces per day



### Product Specification

- Name: MPO Patch Panel
- Fiber Count: 12 Fibers
- Polarity: Type A
- Cable (OD): 3.0mm
- Fiber Mode: OM3 50/125μm
- Connector Type: MPO Male To MPO Female
- Wavelength: 850/1300nm
- Cable Jacket: OFNP
- Jacket Color: Pink
- Highlight: High Density MPO Patch Panel, Angled MPO Patch Panel, MPO Patch Panel Fully Loaded



### More Images



## Product Description

### 1U 192 Fiber Ultra High Density Angled MPO Patch Panel Fully Loaded

The MPO trunk cables with a braided tubing jacket are typically designed for a longer cable length in cabinet-to-cabinet applications or for connecting different areas of a building. MPO cable, a cost-effective alternative to time-consuming field termination, is designed for high-density fiber patching in data centers which need space saving and reduce cable management problems.

#### Applications of MPO Trunk Patch Cable

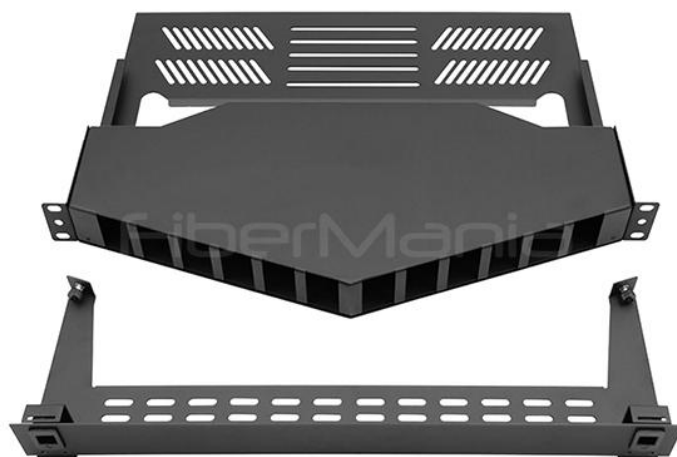
1. Data Center Interconnect
2. High-Density Fiber Management
3. Telecommunication Networks and CATV networks
4. LAN/WAN Premises

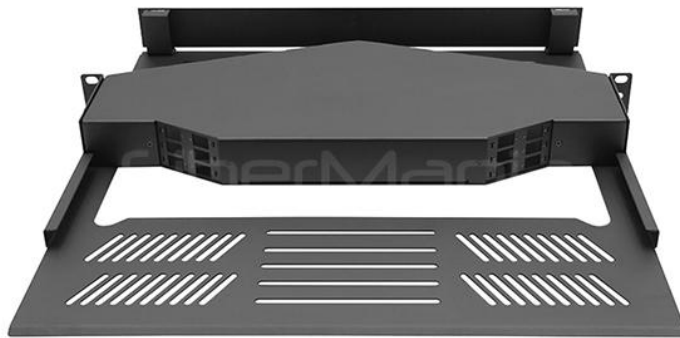
#### Features of MPO MPO Trunk Patch Cable

1. Ultra high density compact design
2. Can be ordered either empty or fully loaded version
3. Unique tool-free installation design for easy and fast assembly and installation
4. Easy cable routine by using front and rear cable management bar
5. Available in horizontal type and angle type

#### Specifications of MPO Trunk Patch Cable

Connector	MPO(Male to Female)
Fiber Mode	OM3 50/125μm
Polishing Type	UPC
Connector IL	0.35dB Max (0.15dB Typ.)
Connector RL	≥20dB
Breakout Type	0.3m Equal Breakout
Glass Fiber	Corning ClearCurve®
10G Ethernet Distance	400m at 850nm
Attenuation at 850nm	≤2.3dB/km
Attenuation at 1300nm	≤0.6dB/km
Installation Tensile Load	66N
Tensile Strength (Long/Short Term)	80/240N
Storage Temperature	-40 to +85°C
Operating Temperature	-20 to +85°C





 **FIBERMANIA** Shenzhen FiberMania Technology Co., Ltd.



17704025189



[sales@fiber-mania.com](mailto:sales@fiber-mania.com)



[optical-fibercables.com](http://optical-fibercables.com)

3F, Building A2, Yinlong Industrial Park, Longdong, Longgang District, Shenzhen, China, 518116