

Wall Mount Fiber Enclosure With Splicing Module and 6 Ported SC/APC LGX Adapter Panel

Our Product Introduction

for more products please visit us on optical-fibercables.com

Basic Information

- Place of Origin: Shenzhen, China
- Brand Name: FIBERMANIA
- Certification: CE, RoHS
- Model Number: FWE-6SCA-C-BK
- Minimum Order Quantity: 10 Pieces
- Price: Negotiable
- Packaging Details: PE Bag+Carton
- Payment Terms: T/T, Western Union, L/C
- Supply Ability: 1000 Pieces



Product Specification

- Name: Optical Fiber Distribution Box
- Wiring Devices: ODF
- Fiber Count: 6 Fibers
- Capacity: 1 LGX Adapter Panel
- Fiber Mode: OS2 9/125μm
- Adapter Type: SC/APC Simplex
- Dimensions (HxWxD): 6.3X5.5X1.57 Inch
- Color: Black
- Highlight: **Wall Mount Fiber Enclosure,
Fiber Enclosure With Splicing Module,
Fiber Enclosure With LGX Adapter Panel**



Product Description

Wall Mount Fiber Enclosure With Splicing Module and 6 Ported SC/APC LGX Adapter Panel

A fiber optic network is a complicated and systematic machine that requires a methodical approach in order to reserve functionality; the Fiber Patch Panel serves as a device employed to maintain a centralized means of organization, peak performance standards, while securing your network at the same time. In essence, the Fiber Patch Panel is a cable manager; through utilizing the panel, cables should retain the proper bend radius and be easily identifiable, which will facilitate use and simplify future maintenance procedures.

FiberMania supply a wide portfolio of fiber panels listed as below:

1. Fixed Patch Panels
2. Slide Out Patch Panels
3. Swing Out Patch Panels
4. LGX Rack Mount Patch Panels
5. Wall Mount Enclosures

Features

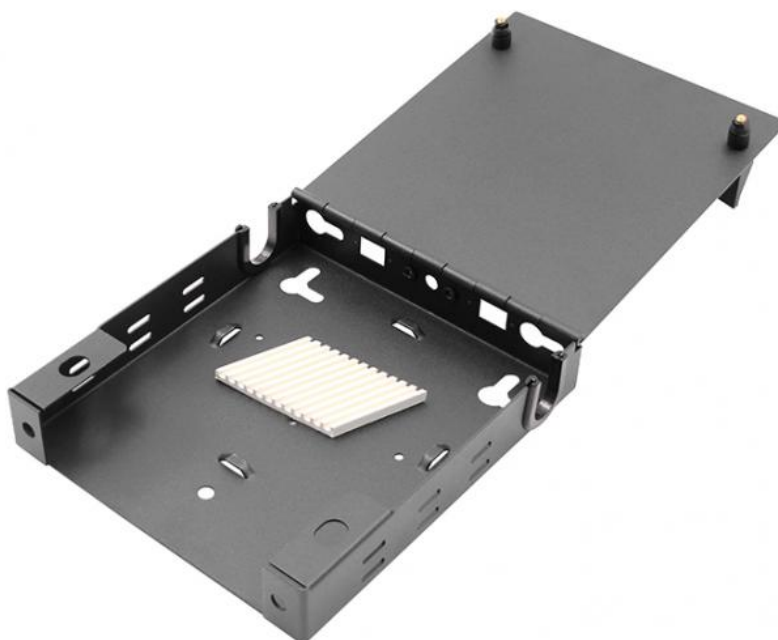
1. LGX compatible design
2. Wall mountable
3. Holds 1 LGX adapter panel
4. Includes one small spool for cable routing
5. OEM packaging
6. Can be ordered either empty or with adapters and pigtails fully loaded

Application

1. Local Area Network
2. CATV Network
3. FTTx System
4. Wide Area Network
5. Test Instruments

Specifications

Fiber Capacity of panel	12-144 core(12 24 48 port usually)
Panel Connector	SC LC ST FC
Type	Sliding Fixed
Dimension	19" 1U/2U/3U/4U...
Material	Cold Rolled Steel or Aluminum
Storage Temperature	-45~+65°C
Thickness	1.0 1.2 mm
Accessories	Cable ties, mounting ear screws, and spiral wrap tube



Q1: What is the warranty of FiberMania's fiber patch cord?

A: FiberMania warrants that all fiber patch cords supplied are free from defects in material and workmanship for a period of five (5) years from the date of supply. All fiber optic bulk cables are UL profiled and every single cable is 100% tested.

Q2: Is it possible to customize our brand information on your fiber cable?

A: Yes, we can print your brand name onto our cable jacket and 1KM total cable length is requested.

Q3: Can you do 3D interferometer test?

A: Yes, we do the 3D test per our customer's request, we can have the pass rate over 90% and even 100% if necessary.

Q4: What is your MOQ of your products?

A: We only have MOQ for some special customized cable order, we request 1km as the total length of the bulk cable, you may consider stock the bulk cable with us for your urgent order production.

Q5: Are free samples available from you?

A: Yes, we are always happy to offer the free samples for all of our customers' projects provided that the total cost is under 50 US dollars.

Q6: Do you accept OEM and ODM orders?

A: Absolutely yes, we have been doing OEM services since we start in this business, and for every single label, printing, bag and carton design, we always treat it seriously and do it nicely. Our engineers can help you with your current design and even can open the new tooling for your specific project.



FIBERMANIA Shenzhen FiberMania Technology Co., Ltd.



17704025189



sales@fiber-mania.com



optical-fibercables.com

3F, Building A2, Yinlong Industrial Park, Longdong, Longgang District, Shenzhen, China, 518116